

APOWERCON

Handling Systems (Pty) Ltd.

Moving your business along our lines

Conveyor specialists with 30 years experience in the field

Manufacturers of:

Gravity roller conveyors
Flat bed conveyors
Troughed belt conveyors
Apron belt conveyors
Pallet handling conveyors
Drum handling conveyors
Powered roller conveyors
Chain / Slat conveyors
Bottle slat conveyors
Stackers and loaders
Inter-floor conveyors
Overhead monorail conveyors
Bulk handling conveyors
Baggage handling conveyors
Extendable conveyors
Casflex conveyors
Special application equipment
Stainless steel / mild steel / aluminium
Factory Automation
Complete turnkey projects



www.Powercon.co.za
Info@powercon.co.za

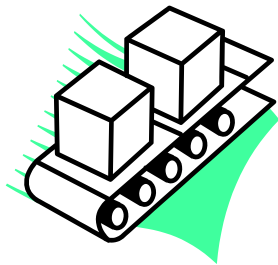
PO Box 39232, Queensburgh, 4070
25 Downie Crescent, Queensmead Industrial Area, Queensburgh, Durban
KwaZulu Natal, South Africa
Tel: +27 (0) 31 464 6497
Spares Tel: +27 (0) 31 463 2174
Fax: +27 (0) 31 464 3082

**BROWSE THROUGH OUR CATALOGUE TO SEE HOW
WE CAN HELP YOU INCREASE PRODUCTIVITY AND
DEVELOP YOUR BUSINESS**

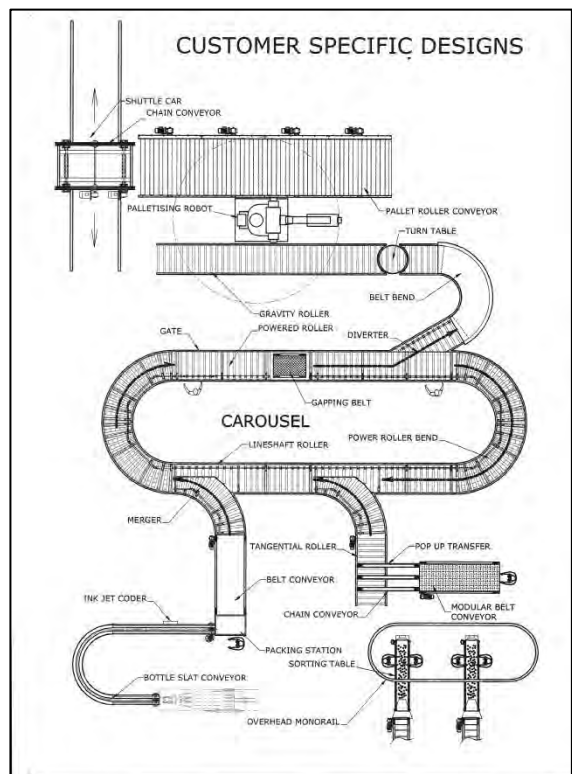
At **POWERCON HANDLING SYSTEMS**, we strive to satisfy our customers by manufacturing and installing **Quality Conveyor Systems**, competing at an international level. We will undertake conveyor projects from the simplest of applications to complete Turnkey Operations and Factory Automation projects. Established in 1982, our track record speaks for itself.

MANUFACTURERS OF:

- Gravity Roller Conveyors**
- Belt Conveyors**
- Chain/Slat Conveyors**
- Bottle Slat Conveyors**
- Stackers and loaders**
- Powered Roller Conveyors**
- Overhead Monorail Conveyors**
- Bulk Handling Conveyors**
- In-Line Checkweighers**

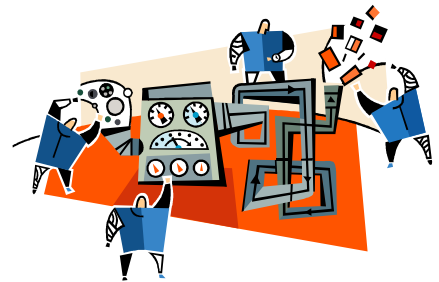


**We also complete
Automation/Turnkey Projects
and build Special Application
Equipment.**



There are a few primary considerations when planning and designing system/organisation requirements:

- Factory layout considering immediate and long-term alterations and additions.
- Conveyor line operation relative to system requirements.
- Factory operation such as single or double shift.
- Volume to be handled and operational speed.
- Nature of the item to be handled, with respect to carrier surface, stability, etc.
- Degree of automation envisaged.
- Space available for the operation.
- Need to retain or change the orientation of the item to the conveyor.



Once all of the above has been considered, a **POWERCON** Engineer can select the correct solution from the wide range of standard and non-standard equipment, to best suit the application.

POWERCON's experience and knowledge are available to help you select the correct methods and equipment to best suit your specific requirements/specifications. **POWERCON** will undertake the design, manufacture and installation of the complete system including the operating controls, giving you peace of mind and reducing the number of contractors required to complete a system.

TANGENTIALLY POWERED & ROLLER TO ROLLER POWDERED CONVEYORS

TANGENTIALLY POWERED ROLLER CONVEYORS

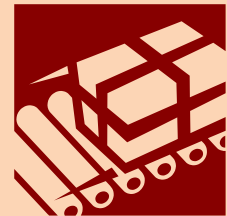
These are rollers powered by a single continuous chain, manufactured to be reliable and easily maintained. This is not to be confused with "chain to chain" jump driven roller conveyors. Although some applications warrant jump driven rollers such as applications with limited space or in very short sections of conveyor.

Advantages of Tangentially Powered Rollers:

- ✓ Easy to maintain.
- ✓ Roller repairs can be done online.
- ✓ If a sprocket fails, the line will continue to run.
- ✓ **It's safe as there are no** exposed drives.
- ✓ Modular Design.
- ✓ Reliable.
- ✓ Longer lengths of Conveyor up to 15m long.

Scope of Rollers we offer in Tangentially Powered and Chain to Chain:

- ❑ **50mm**
- ❑ **60mm**
- ❑ **63mm**
- ❑ **76mm**
- ❑ **89mm**



CHAIN TO CHAIN POWERED ROLLERS

These are simple roller conveyors utilising duplex sprockets and short chains wrapped over from one sprocket to the next. The drive is mounted in the centre of the conveyor and power is transferred from one roller to the next in both directions. With this application, close attention need to be made with regards to loading.



Advantages of Chain to Chain Powered Rollers:

- ✓ Initial cost outlay.
- ✓ Safe as there are no exposed drives.
- ✓ Modular design.
- ✓ Simple drive arrangement.

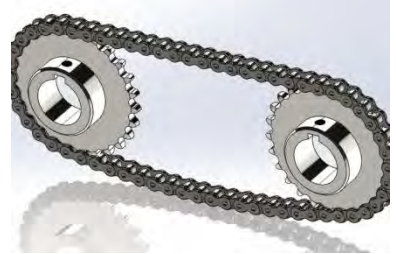
Disadvantages of Chain to Chain Powered Rollers:

- ✗ Should one roller fail the entire line goes down.
- ✗ Shorter lengths of conveyor per drive, maximum 6m long in most cases.
- ✗ Sprockets are prone to excessive wear, particularly near the drive.
- ✗ Sprockets closest to the drive, drives the full conveyor load.

TANGENTIALLY POWERED & ROLLER TO ROLLER POWDERED CONVEYORS

OPTIONAL STEEL OR NYLON SPROCKETS

This is an important aspect of the conveyor design. For most applications, Nylon Sprockets are advised. If a sprocket is damaged, there is little to no risk that it would damage the chain. This means that the line can continue and the damaged sprocket can be replaced later or when production stops.



Sprockets are also available in natural finish, galvanised finish, mirror finish and stainless steel in various grades.

BEARINGS OPTIONS

We only use Nylon housings, fitted with rubber sealed precision bearings and dust covers to protect the bearing. In stainless steel applications such as in a wet environment or food application, we can fit stainless steel bearings. Bearings are available in different lengths and widths according to customer requirements. Frames are CNC punched to ensure accuracy when running the line thereafter painted, powder coated or galvanised. Frames can also be supplied in Stainless Steel 304, 316, 3CR12 or Zink Plated.

LOAD RATINGS (RECOMMENDED)

50mm Rollers (100mm-600mm) Accumulation	10kg Per Roller
50mm Rollers (100mm-600mm) Fixed Drive	15kg Per Roller
60mm Rollers (100mm-600mm) Accumulation	15kg Per Roller
60mm Rollers (100mm-600mm) Fixed Drive	20kg Per Roller
76mm Rollers (100mm-1200mm) Accumulation	150kg Per Roller
76mm Rollers (100mm-1200mm) Fixed Drive	200kg Per Roller



We also manufacture to meet customer specifications in order to produce equipment that will suit the customer's current lines.

