

A POWERCON

Handling Systems (Pty) Ltd.

Moving your business along our lines

Conveyor specialists with 30 years experience in the field

Manufacturers of:

- Gravity roller conveyors
- Flat bed conveyors
- Troughed belt conveyors
- Apron belt conveyors
- Pallet handling conveyors
- Drum handling conveyors
- Powered roller conveyors
- Chain / Slat conveyors
- Bottle slat conveyors
- Stackers and loaders
- Inter-floor conveyors
- Overhead monorail conveyors
- Bulk handling conveyors
- Baggage handling conveyors
- Extendable conveyors
- Casflex conveyors
- Special application equipment
- Stainless steel / mild steel / aluminium
- Factory Automation
- Complete turnkey projects



www.Powercon.co.za
Info@powercon.co.za

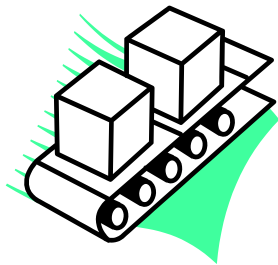
PO Box 39232, Queensburgh, 4070
25 Downie Crescent, Queensmead Industrial Area, Queensburgh, Durban
KwaZulu Natal, South Africa
Tel: +27 (0) 31 464 6497
Spares Tel: +27 (0) 31 463 2174
Fax: +27 (0) 31 464 3082

**BROWSE THROUGH OUR CATALOGUE TO SEE HOW
WE CAN HELP YOU INCREASE PRODUCTIVITY AND
DEVELOP YOUR BUSINESS**

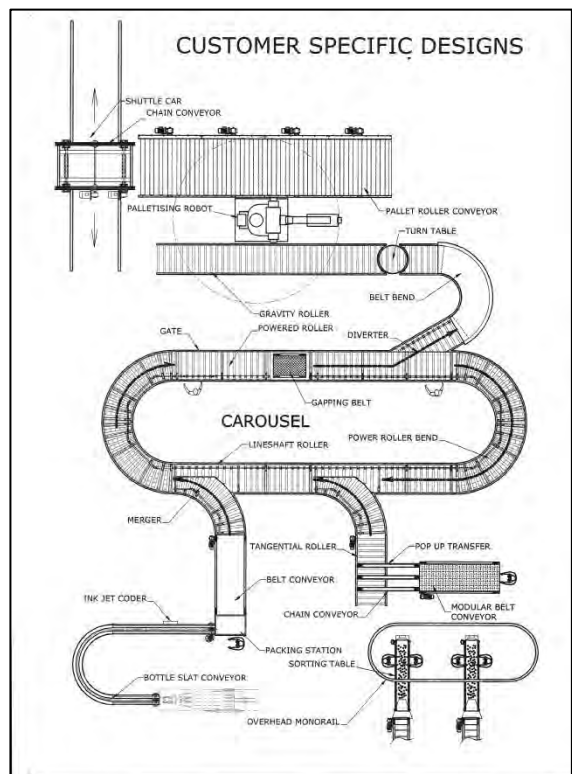
At **POWERCON HANDLING SYSTEMS**, we strive to satisfy our customers by manufacturing and installing **Quality Conveyor Systems**, competing at an international level. We will undertake conveyor projects from the simplest of applications to complete Turnkey Operations and Factory Automation projects. Established in 1982, our track record speaks for itself.

MANUFACTURERS OF:

- Gravity Roller Conveyors**
- Belt Conveyors**
- Chain/Slat Conveyors**
- Bottle Slat Conveyors**
- Stackers and loaders**
- Powered Roller Conveyors**
- Overhead Monorail Conveyors**
- Bulk Handling Conveyors**
- In-Line Checkweighers**

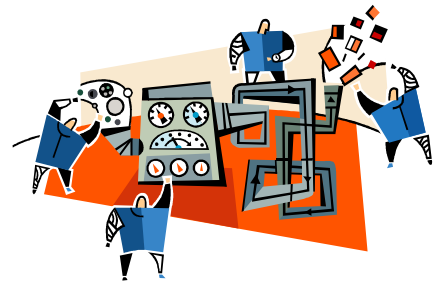


**We also complete
Automation/Turnkey Projects
and build Special Application
Equipment.**



There are a few primary considerations when planning and designing system/organisation requirements:

- Factory layout considering immediate and long-term alterations and additions.
- Conveyor line operation relative to system requirements.
- Factory operation such as single or double shift.
- Volume to be handled and operational speed.
- Nature of the item to be handled, with respect to carrier surface, stability, etc.
- Degree of automation envisaged.
- Space available for the operation.
- Need to retain or change the orientation of the item to the conveyor.



Once all of the above has been considered, a **POWERCON** Engineer can select the correct solution from the wide range of standard and non-standard equipment, to best suit the application.

POWERCON's experience and knowledge are available to help you select the correct methods and equipment to best suit your specific requirements/specifications. **POWERCON** will undertake the design, manufacture and installation of the complete system including the operating controls, giving you peace of mind and reducing the number of contractors required to complete a system.

SUSHI CONVEYORS

POWERCON is the only South African based company who specialises in manufacturing a range of Sushi Conveyors. Unlike other manufacturers of conveyors, we have developed a system that is not only reliable but also a lot more aesthetically which will enhance your restaurant's overall appearance. **POWERCON's** versatile range of Belt Conveyors are built to suit all your warehousing requirements. Designed and manufactured in-house at our facilities in Durban, South Africa. When your conveyor is ready our professional team will install your unit/system wherever you are ready.



STANDARD FEATURES

- High Quality finishes.
- Horse Shoe Chain in Plastic or Stainless Steel.
- Low Friction Modular Tracks.
- Hygienic and easy to keep clean.
- Can be built with supports or placed on top of existing counters.
- Quick installation means less downtime.
- Overhead Lighting available.
- 1 or multiple tier systems.
- Panel with variable speed drive
- Motor protection.
- Fast turnaround times on spares.



SUSHI CONVEYOR LAYOUT OPTIONS

Complex



Rectangle



Multi-tiered



Oval

