

# **A**POWERCON

Handling Systems (Pty) Ltd.

Moving your business along our lines

## **Conveyor specialists with 30 years experience in the field**

Manufacturers of:

Gravity roller conveyors  
Flat bed conveyors  
Troughed belt conveyors  
Apron belt conveyors  
Pallet handling conveyors  
Drum handling conveyors  
Powered roller conveyors  
Chain / Slat conveyors  
Bottle slat conveyors  
Stackers and loaders  
Inter-floor conveyors  
Overhead monorail conveyors  
Bulk handling conveyors  
Baggage handling conveyors  
Extendable conveyors  
Casflex conveyors  
Special application equipment  
Stainless steel / mild steel / aluminium  
Factory Automation  
Complete turnkey projects



[www.Powercon.co.za](http://www.Powercon.co.za)  
[Info@powercon.co.za](mailto:Info@powercon.co.za)

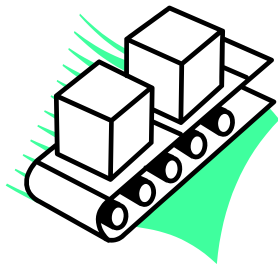
PO Box 39232, Queensburgh, 4070  
25 Downie Crescent, Queensmead Industrial Area, Queensburgh, Durban  
KwaZulu Natal, South Africa  
Tel: +27 (0) 31 464 6497  
Spares Tel: +27 (0) 31 463 2174  
Fax: +27 (0) 31 464 3082

**BROWSE THROUGH OUR CATALOGUE TO SEE HOW  
WE CAN HELP YOU INCREASE PRODUCTIVITY AND  
DEVELOP YOUR BUSINESS**

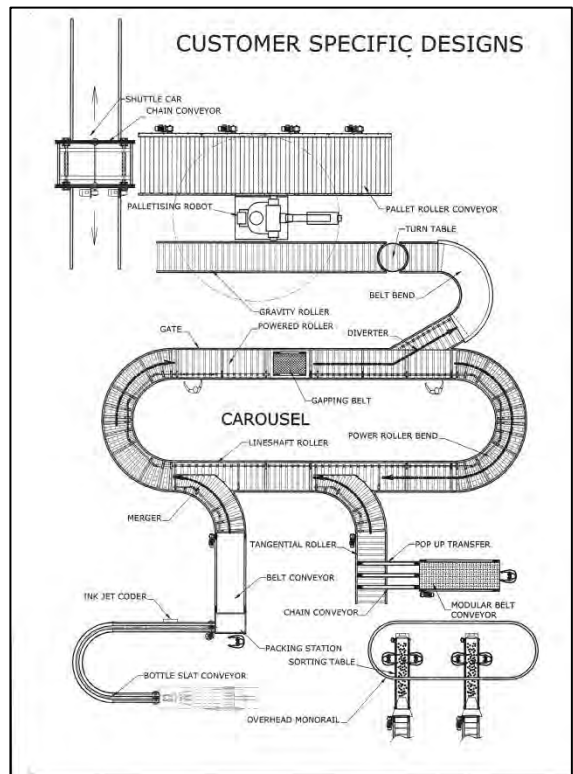
At **POWERCON HANDLING SYSTEMS**, we strive to satisfy our customers by manufacturing and installing **Quality Conveyor Systems**, competing at an international level. We will undertake conveyor projects from the simplest of applications to complete Turnkey Operations and Factory Automation projects. Established in 1982, our track record speaks for itself.

## **MANUFACTURERS OF:**

- Gravity Roller Conveyors**
- Belt Conveyors**
- Chain/Slat Conveyors**
- Bottle Slat Conveyors**
- Stackers and loaders**
- Powered Roller Conveyors**
- Overhead Monorail Conveyors**
- Bulk Handling Conveyors**
- In-Line Checkweighers**

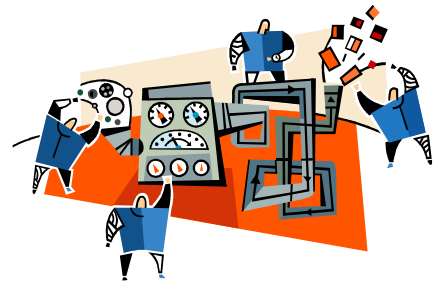


**We also complete  
Automation/Turnkey Projects  
and build Special Application  
Equipment.**



There are a few primary considerations when planning and designing system/organisation requirements:

- Factory layout considering immediate and long-term alterations and additions.
- Conveyor line operation relative to system requirements.
- Factory operation such as single or double shift.
- Volume to be handled and operational speed.
- Nature of the item to be handled, with respect to carrier surface, stability, etc.
- Degree of automation envisaged.
- Space available for the operation.
- Need to retain or change the orientation of the item to the conveyor.

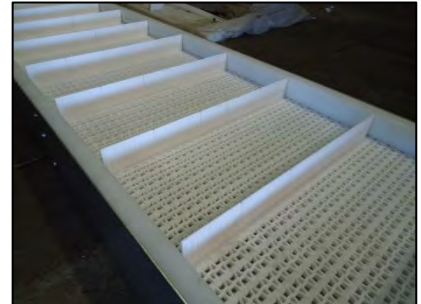


Once all of the above has been considered, a **POWERCON** Engineer can select the correct solution from the wide range of standard and non-standard equipment, to best suit the application.

**POWERCON's** experience and knowledge are available to help you select the correct methods and equipment to best suit your specific requirements/specifications. **POWERCON** will undertake the design, manufacture and installation of the complete system including the operating controls, giving you peace of mind and reducing the number of contractors required to complete a system.

## MODULAR BELT CONVEYORS

Modular Belt Conveyors are becoming increasingly popular for a number of reasons. They are a step above everything else available while still offering versatility.



### Belt Types

Flat Top	Suitable when a fully closed belt surface is preferred.
Flush Grid	Commonly used in applications where drainage or airflow is desired.
Raised Rib	Applications where product stability over transfers is a concern.
Open Hinge	Used where sanitation and hygiene are a primary concern.
Friction Top	Incline Conveyors, where the elevation of product changes.
Roller Top	Low-pressure accumulation applications
Perforated Flat Top	Used when air flow and water flow are critical but the percentage of belt open area must remain low.

### **Benefits of Modular Belt Conveyors:**

- ❑ High durability and low maintenance.
- ❑ Damaged links are quickly and easily stripped out and replaced.
- ❑ Well suited to convey products with sharp edges such as bone, frozen goods, glass etc.
- ❑ The belt is driven by sprockets keyed to the drive and tail shafts. This eliminates belts "Tracking-Off".
- ❑ The modular belt design facilitates easy cleaning and eliminates standing water.
- ❑ Belts can be high pressure washed in position to clean the belt links and pins as often as required.

