

# **A POWERCON**

Handling Systems (Pty) Ltd.

Moving your business along our lines

## **Conveyor specialists with 30 years experience in the field**

Manufacturers of:  
Gravity roller conveyors  
Flat bed conveyors  
Troughed belt conveyors  
Apron belt conveyors  
Pallet handling conveyors  
Drum handling conveyors  
Powered roller conveyors  
Chain / Slat conveyors  
Bottle slat conveyors  
Stackers and loaders  
Inter-floor conveyors  
Overhead monorail conveyors  
Bulk handling conveyors  
Baggage handling conveyors  
Extendable conveyors  
Casflex conveyors  
Special application equipment  
Stainless steel / mild steel / aluminium  
Factory Automation  
Complete turnkey projects



[www.Powercon.co.za](http://www.Powercon.co.za)  
[Info@powercon.co.za](mailto:Info@powercon.co.za)

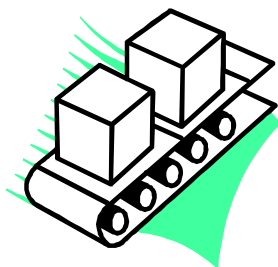
PO Box 39232, Queensburgh, 4070  
25 Downie Crescent, Queensmead Industrial Area, Queensburgh, Durban  
KwaZulu Natal, South Africa  
Tel: +27 (0) 31 464 6497  
Spares Tel: +27 (0) 31 463 2174  
Fax: +27 (0) 31 464 3082

**BROWSE THROUGH OUR CATALOGUE TO SEE HOW  
WE CAN HELP YOU INCREASE PRODUCTIVITY AND  
DEVELOP YOUR BUSINESS** → → → → → → → → → →

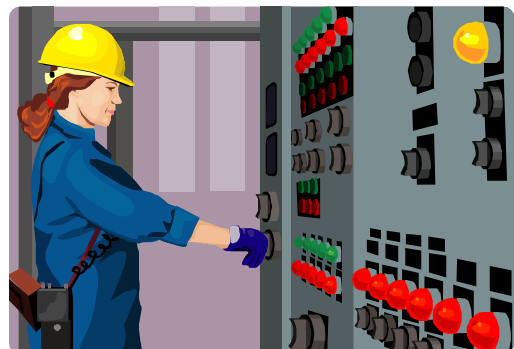
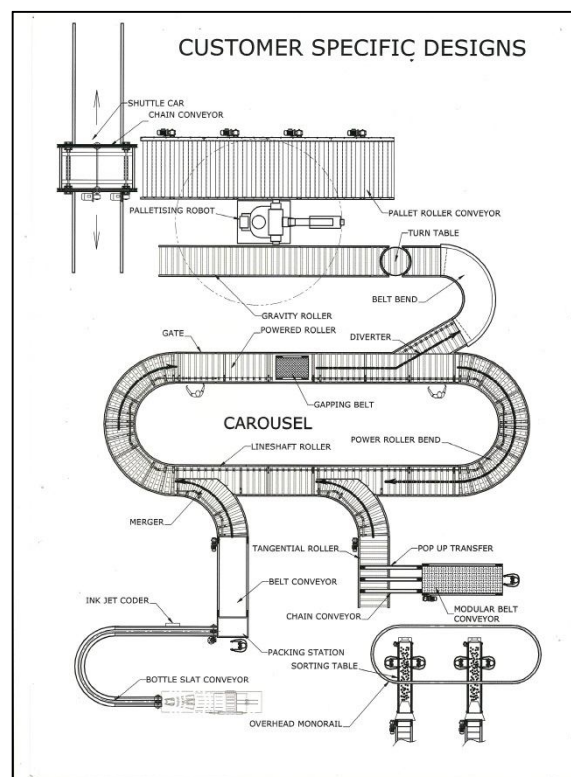
At **POWERCON HANDLING SYSTEMS**, we strive to satisfy our customers by manufacturing and installing **Quality Conveyor Systems**, competing at an international level. We will undertake conveyor projects from the simplest of applications to complete Turnkey Operations and Factory Automation projects. Established in 1982, our track record speaks for itself.

## MANUFACTURERS OF:

- Gravity Roller Conveyors
- Belt Conveyors
- Chain/Slat Conveyors
- Bottle Slat Conveyors
- Stackers and loaders
- Powered Roller Conveyors
- Overhead Monorail Conveyors
- Bulk Handling Conveyors
- In-Line Checkweighers



We also complete  
Automation/Turnkey Projects  
and build Special Application  
Equipment.



Contact us

Tel: 031-464 6497

Fax: 031-464 3082

Email: [info@powercon.co.za](mailto:info@powercon.co.za)

Website

[www.powercon.co.za](http://www.powercon.co.za)

Address:

25 Downie Crescent, Queensburgh, Durban, South Africa

There are a few primary considerations when planning and designing system/organisation requirements:

- Factory layout considering immediate and long-term alterations and additions.
- Conveyor line operation relative to system requirements.
- Factory operation such as single or double shift.
- Volume to be handled and operational speed.
- Nature of the item to be handled, with respect to carrier surface, stability, etc.
- Degree of automation envisaged.
- Space available for the operation.
- Need to retain or change the orientation of the item to the conveyor.



Once all of the above has been considered, a **POWERCON** Engineer can select the correct solution from the wide range of standard and non-standard equipment, to best suit the application.

**POWERCON's** experience and knowledge are available to help you select the correct methods and equipment to best suit your specific requirements/specifications. **POWERCON** will undertake the design, manufacture and installation of the complete system including the operating controls, giving you peace of mind and reducing the number of contractors required to complete a system.

## INTER-FLOOR CONVEYORS

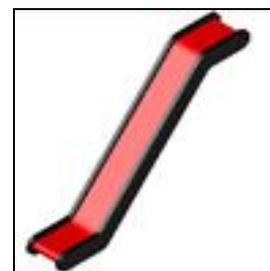
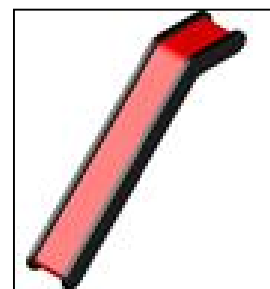
Inter-Floor Conveyors are designed and built to cope with the heavy duty production or storage environment. They transfer products up and down from second level floors. Generally with a heavy weight belt construction, these conveyors are designed to convey products of all shapes and sizes. **POWERCON's** versatile range of Inter-Floor Conveyors are built to suit all your warehousing requirements, fully designed and manufactured in-house from our facilities in Durban, South Africa. A professional team will install your unit wherever required.

### **STANDARD FEATURES**

- Mild Steel Powder Coated / Stainless Steel Frame.
- Guaranteed tracking due to ALL pulleys being machine crowned.
- Robust Construction.
- All widths, lengths and incline angles are to customer specific requirements.
- Simple to maintain drive configuration.
- Belt types - PVC, Rubber and special application belts like "shark tooth" or longitudinal groove.
- Accessories include a large range of guide systems, supports etc.
- Standard with power feed and nose over, options and lengths available but generally 1.2m long.
- Forward and Reverse control with emergency stops as standard on all units.

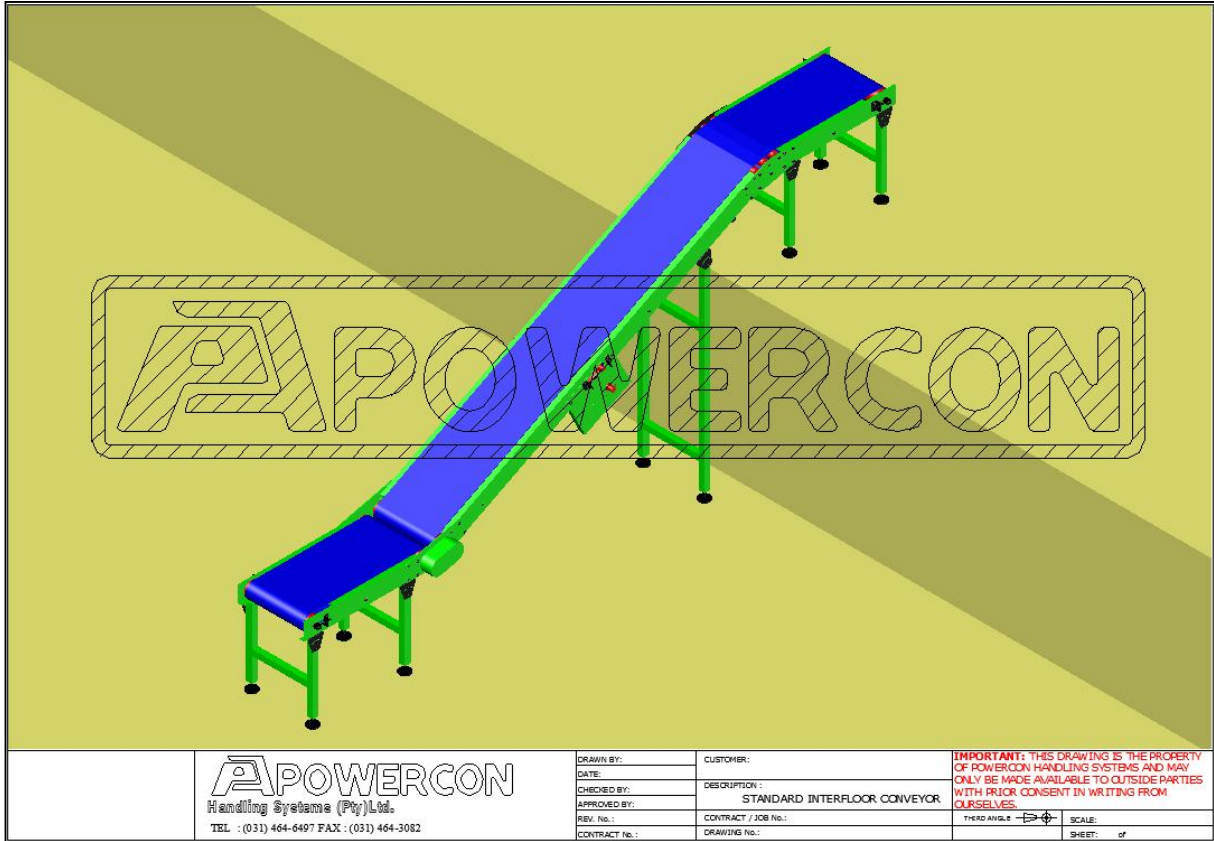
### **SPECIFICATIONS**

<b>Height Top of Conveyor</b>	750mm
<b>Belt Width</b>	300mm – 2400mm
<b>Over Deck Width</b>	Belt Width +100mm
<b>Belt</b>	Optional
<b>Drive</b>	Reversible
<b>Motor/Gearbox</b>	Close coupled Bonfiglioli or similar.
<b>Finish</b>	All structures are powder coat to customer colours provided available
<b>Load Rating</b>	Generally up to 50kg/m



Moving your business along our lines

## INTER-FLOOR CONVEYORS



For a quote, please provide us with the following information:

- Your Contact Details
- Site for Installation
- Dimensions of Product (L x W x H)
- Weight of Product
- Volumes to be moved
- Floor Height
- Any other special instructions



Contact us    Tel: 031-464 6497    Fax:031-464 3082    Email: [info@powercon.co.za](mailto:info@powercon.co.za)

Website    [www.powercon.co.za](http://www.powercon.co.za)

Address:    25 Downie Crescent, Queensburgh, Durban, South Africa