

# **A POWERCON**

Handling Systems (Pty) Ltd.

Moving your business along our lines

## **Conveyor specialists with 30 years experience in the field**

Manufacturers of:  
Gravity roller conveyors  
Flat bed conveyors  
Troughed belt conveyors  
Apron belt conveyors  
Pallet handling conveyors  
Drum handling conveyors  
Powered roller conveyors  
Chain / Slat conveyors  
Bottle slat conveyors  
Stackers and loaders  
Inter-floor conveyors  
Overhead monorail conveyors  
Bulk handling conveyors  
Baggage handling conveyors  
Extendable conveyors  
Casflex conveyors  
Special application equipment  
Stainless steel / mild steel / aluminium  
Factory Automation  
Complete turnkey projects



[www.Powercon.co.za](http://www.Powercon.co.za)  
[Info@powercon.co.za](mailto:Info@powercon.co.za)

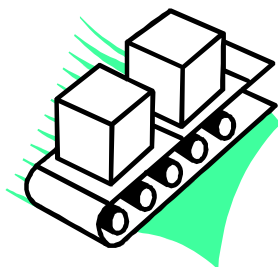
PO Box 39232, Queensburgh, 4070  
25 Downie Crescent, Queensmead Industrial Area, Queensburgh, Durban  
KwaZulu Natal, South Africa  
Tel: +27 (0) 31 464 6497  
Spares Tel: +27 (0) 31 463 2174  
Fax: +27 (0) 31 464 3082

**BROWSE THROUGH OUR CATALOGUE TO SEE HOW  
WE CAN HELP YOU INCREASE PRODUCTIVITY AND  
DEVELOP YOUR BUSINESS** → → → → → → → → → →

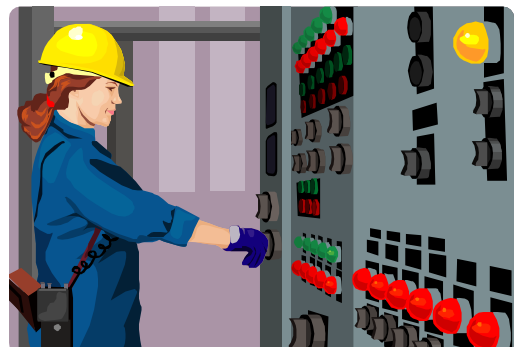
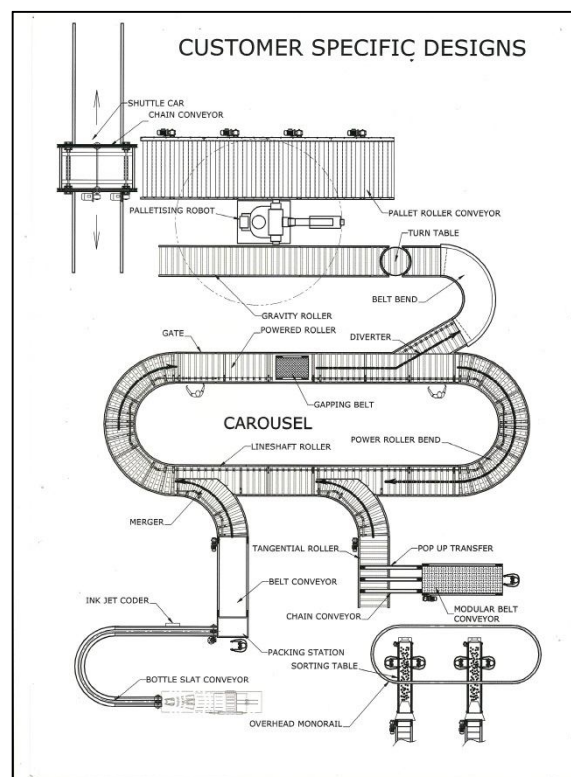
At **POWERCON HANDLING SYSTEMS**, we strive to satisfy our customers by manufacturing and installing **Quality Conveyor Systems**, competing at an international level. We will undertake conveyor projects from the simplest of applications to complete Turnkey Operations and Factory Automation projects. Established in 1982, our track record speaks for itself.

### MANUFACTURERS OF:

- Gravity Roller Conveyors
- Belt Conveyors
- Chain/Slat Conveyors
- Bottle Slat Conveyors
- Stackers and loaders
- Powered Roller Conveyors
- Overhead Monorail Conveyors
- Bulk Handling Conveyors
- In-Line Checkweighers



We also complete  
**Automation/Turnkey Projects**  
and build **Special Application**  
**Equipment.**



Contact us

Tel: 031-464 6497

Fax: 031-464 3082

Email: [info@powercon.co.za](mailto:info@powercon.co.za)

Website

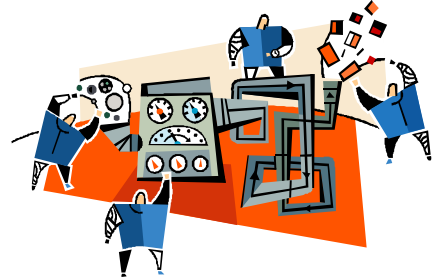
[www.powercon.co.za](http://www.powercon.co.za)

Address:

25 Downie Crescent, Queensburgh, Durban, South Africa

There are a few primary considerations when planning and designing system/organisation requirements:

- Factory layout considering immediate and long-term alterations and additions.
- Conveyor line operation relative to system requirements.
- Factory operation such as single or double shift.
- Volume to be handled and operational speed.
- Nature of the item to be handled, with respect to carrier surface, stability, etc.
- Degree of automation envisaged.
- Space available for the operation.
- Need to retain or change the orientation of the item to the conveyor.



Once all of the above has been considered, a **POWERCON** Engineer can select the correct solution from the wide range of standard and non-standard equipment, to best suit the application.

**POWERCON's** experience and knowledge are available to help you select the correct methods and equipment to best suit your specific requirements/specifications. **POWERCON** will undertake the design, manufacture and installation of the complete system including the operating controls, giving you peace of mind and reducing the number of contractors required to complete a system.

## **GRAVITY ROLLER CONVEYORS**

There is a huge variety of Gravity Roller options, all of which are manufactured in-house at our Durban factory. Our Standard Gravity Roller Frames are CNC punched at fixed:

- ❑ 20mm centres for light duty (2-30kg Rollers)
- ❑ 40mm centres for medium duty (40kg-85kg Rollers)
- ❑ 50mm pitch for heavy duty (125-300kg Rollers)

This allows a variety of options in system load rating by simply placing rollers at different pitches. It also allows the system to be changed to suit various applications, once a line is revised or modified to suit future applications.



All of the above are available in natural, galvanised, epoxy, rubber, PU finishes or stainless steel in various grades.

### **Scope of Rollers we offer:**

- ❑ **PVC Rollers:** 20mm, 30mm and 50mm diameter
- ❑ **Mild Steel Rollers:** 25mm, 32mm, 38mm, 50mm, 57mm, 60mm, 63mm, 76mm, 89mm diameter
- ❑ **Stainless Steel Rollers:** 38mm, 50mm, 60mm, 63mm (with rubber sealed bearings or stainless steel bearings)



All of the above are available in natural, galvanised, epoxy, rubber, PU finishes or stainless steel in various grades.

## **BEARING OPTIONS**

### **Crowded Raceway**

Best suited for general gravity application due to low rolling resistance.

### **Precision Bearings**

All of our bearings are C3 rubber sealed. A dust cover is installed over the bearing to protect it from dirt. This is best suited for accurate and high precision applications and precision stainless steel bearings.

All of the above can be manufactured in unlimited lengths and widths according to your requirements. The Roller Tubes are in 6m lengths therefore it can be cut to any size. Frames are mostly off the shelf and only require bracing before painting, powder coating or galvanising. **POWERCON** manufactures to customer specifications and often divert from the "norm" to meet customer requirements.

Contact us

Tel: 031-464 6497

Fax: 031-464 3082

Email: [info@powercon.co.za](mailto:info@powercon.co.za)

Website

[www.powercon.co.za](http://www.powercon.co.za)

Address:

25 Downie Crescent, Queensburgh, Durban, South Africa