

A POWERCON

Handling Systems (Pty) Ltd.

Moving your business along our lines

Conveyor specialists with 30 years experience in the field

Manufacturers of:
Gravity roller conveyors
Flat bed conveyors
Troughed belt conveyors
Apron belt conveyors
Pallet handling conveyors
Drum handling conveyors
Powered roller conveyors
Chain / Slat conveyors
Bottle slat conveyors
Stackers and loaders
Inter-floor conveyors
Overhead monorail conveyors
Bulk handling conveyors
Baggage handling conveyors
Extendable conveyors
Casflex conveyors
Special application equipment
Stainless steel / mild steel / aluminium
Factory Automation
Complete turnkey projects



www.Powercon.co.za
Info@powercon.co.za

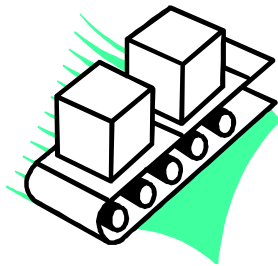
PO Box 39232, Queensburgh, 4070
25 Downie Crescent, Queensmead Industrial Area, Queensburgh, Durban
KwaZulu Natal, South Africa
Tel: +27 (0) 31 464 6497
Spares Tel: +27 (0) 31 463 2174
Fax: +27 (0) 31 464 3082

**BROWSE THROUGH OUR CATALOGUE TO SEE HOW
WE CAN HELP YOU INCREASE PRODUCTIVITY AND
DEVELOP YOUR BUSINESS** → → → → → → → → → →

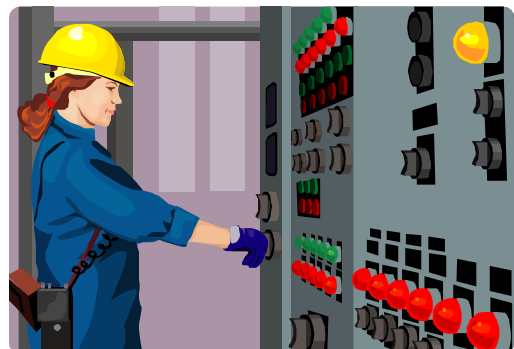
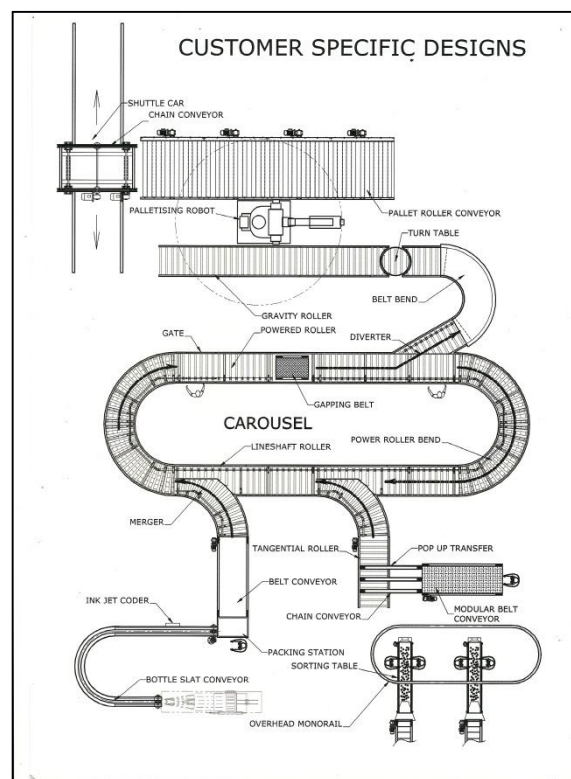
At **POWERCON HANDLING SYSTEMS**, we strive to satisfy our customers by manufacturing and installing **Quality Conveyor Systems**, competing at an international level. We will undertake conveyor projects from the simplest of applications to complete Turnkey Operations and Factory Automation projects. Established in 1982, our track record speaks for itself.

MANUFACTURERS OF:

- Gravity Roller Conveyors
- Belt Conveyors
- Chain/Slat Conveyors
- Bottle Slat Conveyors
- Stackers and loaders
- Powered Roller Conveyors
- Overhead Monorail Conveyors
- Bulk Handling Conveyors
- In-Line Checkweighers

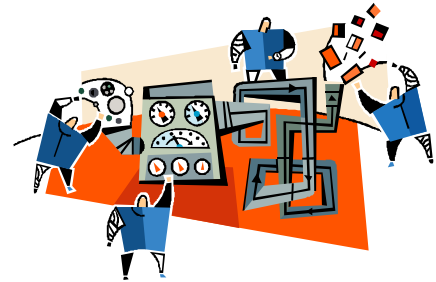


We also complete
Automation/Turnkey Projects
and build **Special Application**
Equipment.



There are a few primary considerations when planning and designing system/organisation requirements:

- Factory layout considering immediate and long-term alterations and additions.
- Conveyor line operation relative to system requirements.
- Factory operation such as single or double shift.
- Volume to be handled and operational speed.
- Nature of the item to be handled, with respect to carrier surface, stability, etc.
- Degree of automation envisaged.
- Space available for the operation.
- Need to retain or change the orientation of the item to the conveyor.



Once all of the above has been considered, a **POWERCON** Engineer can select the correct solution from the wide range of standard and non-standard equipment, to best suit the application.

POWERCON's experience and knowledge are available to help you select the correct methods and equipment to best suit your specific requirements/specifications. **POWERCON** will undertake the design, manufacture and installation of the complete system including the operating controls, giving you peace of mind and reducing the number of contractors required to complete a system.

CASFLEX CONVEYORS

Casflex Conveyors also known as "Flexible Conveyors".

POWERCON offers a range of Flexible Conveyors, ideally suited for warehouse applications where space is limited and floor space is a valuable resource. Ideal applications are moving trays or cartons from one area to another and when the flow changes, it is as simple as pointing the conveyor to the right direction. Casflex Conveyors are designed to be made in modules of 1m long (extended) that reduces to one third its size when retracted. Each module includes a set of supports which are set on swivel and locale PU tyred castors. These modules can be added to any required length or more than one unit can be used to achieve an infinite length. We also offer these in various **Roller Widths from 200mm – 1500mm.**



STANDARD FEATURES

- Zink Plated Rollers for extended life.
- 1m CRS support legs for extra support.
- Durable and sturdy steel construction.
- Dished side plates increase rigidity.
- Epoxy Powder coated support legs for durability.
- Zink plated scissor frames.
- 125mm PU tyred castor for superior wear resilience.
- Choice of 38mm, 50mm or 48mm skate wheels.
- 200kg / 300kg load capacity per meter respectively at 600mm wide.
- Self-tracking rollers.
- Low cost / high efficiency ratio.



Applications:

- ✓ **Warehousing**
- ✓ **Retail Stores**
- ✓ **Manufacturing**
- ✓ **Courier Services**
- ✓ **Distribution**



Contact us

Tel: 031-464 6497

Fax:031-464 3082

Email: info@powercon.co.za

Website

www.powercon.co.za

Address:

25 Downie Crescent, Queensburgh, Durban, South Africa