

A POWERCON

Handling Systems (Pty) Ltd.

Moving your business along our lines

Conveyor specialists with 30 years experience in the field

Manufacturers of:
Gravity roller conveyors
Flat bed conveyors
Troughed belt conveyors
Apron belt conveyors
Pallet handling conveyors
Drum handling conveyors
Powered roller conveyors
Chain / Slat conveyors
Bottle slat conveyors
Stackers and loaders
Inter-floor conveyors
Overhead monorail conveyors
Bulk handling conveyors
Baggage handling conveyors
Extendable conveyors
Casflex conveyors
Special application equipment
Stainless steel / mild steel / aluminium
Factory Automation
Complete turnkey projects



www.Powercon.co.za
Info@powercon.co.za

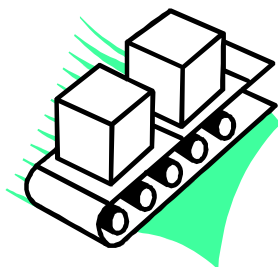
PO Box 39232, Queensburgh, 4070
25 Downie Crescent, Queensmead Industrial Area, Queensburgh, Durban
KwaZulu Natal, South Africa
Tel: +27 (0) 31 464 6497
Spares Tel: +27 (0) 31 463 2174
Fax: +27 (0) 31 464 3082

**BROWSE THROUGH OUR CATALOGUE TO SEE HOW
WE CAN HELP YOU INCREASE PRODUCTIVITY AND
DEVELOP YOUR BUSINESS** → → → → → → → → → →

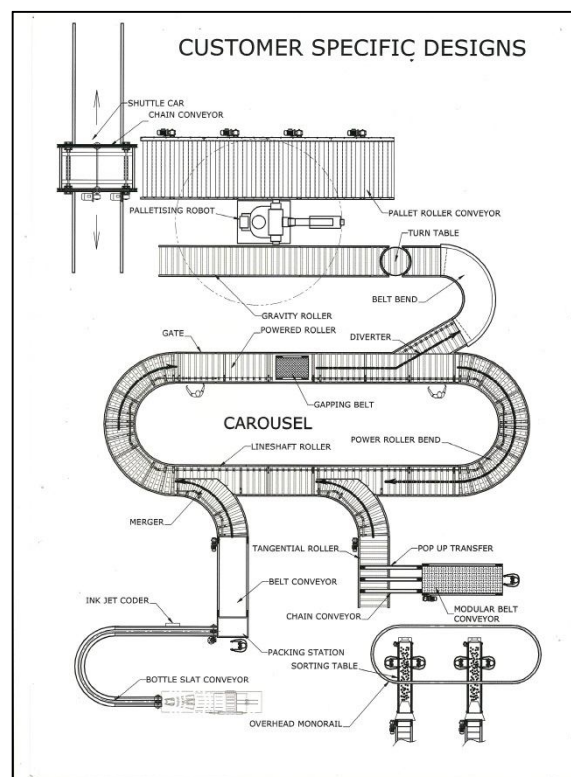
At **POWERCON HANDLING SYSTEMS**, we strive to satisfy our customers by manufacturing and installing **Quality Conveyor Systems**, competing at an international level. We will undertake conveyor projects from the simplest of applications to complete Turnkey Operations and Factory Automation projects. Established in 1982, our track record speaks for itself.

MANUFACTURERS OF:

- Gravity Roller Conveyors
- Belt Conveyors
- Chain/Slat Conveyors
- Bottle Slat Conveyors
- Stackers and loaders
- Powered Roller Conveyors
- Overhead Monorail Conveyors
- Bulk Handling Conveyors
- In-Line Checkweighers

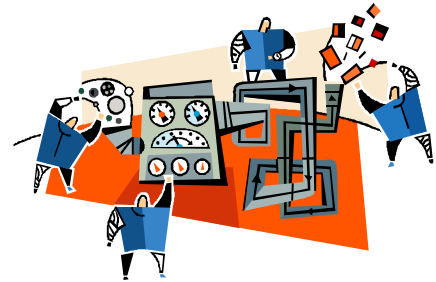


We also complete
Automation/Turnkey Projects
and build **Special Application**
Equipment.



There are a few primary considerations when planning and designing system/organisation requirements:

- Factory layout considering immediate and long-term alterations and additions.
- Conveyor line operation relative to system requirements.
- Factory operation such as single or double shift.
- Volume to be handled and operational speed.
- Nature of the item to be handled, with respect to carrier surface, stability, etc.
- Degree of automation envisaged.
- Space available for the operation.
- Need to retain or change the orientation of the item to the conveyor.



Once all of the above has been considered, a **POWERCON** Engineer can select the correct solution from the wide range of standard and non-standard equipment, to best suit the application.

POWERCON's experience and knowledge are available to help you select the correct methods and equipment to best suit your specific requirements/specifications. **POWERCON** will undertake the design, manufacture and installation of the complete system including the operating controls, giving you peace of mind and reducing the number of contractors required to complete a system.

BOTTLE SLAT CONVEYORS

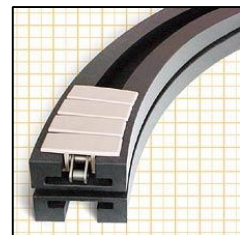
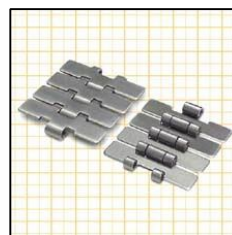
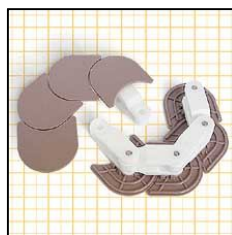
POWERCON manufactures a comprehensive range of Bottle Slat Conveyors to offer our customer a large combination of equipment specifications.

Contrary to the name, Bottle Slat Chains can be used for a multitude of design applications. Belts are offered in acetyl, stainless steel, anti-static, rubber top and zero back pressure slat chain. We manufacture Straight running, Tab or Magna-flex variations of this conveyor. These conveyors are most commonly used in food, beverage and pharmaceutical industries, but are offered where small components are being conveyed or in specialised applications such as box transfers.



Standard Chain Widths

3.25"	(82mm)
4.5"	(114mm)
6"	(152mm)
7.5"	(190mm)
10"	(254mm)
12"	(305mm)



Contact us

Tel: 031-464 6497

Fax: 031-464 3082

Email: info@powercon.co.za

Website

www.powercon.co.za

Address:

25 Downie Crescent, Queensburgh, Durban, South Africa