

A POWERCON

Handling Systems (Pty) Ltd.

Moving your business along our lines

Conveyor specialists with 30 years experience in the field

Manufacturers of:

- Gravity roller conveyors
- Flat bed conveyors
- Troughed belt conveyors
- Apron belt conveyors
- Pallet handling conveyors
- Drum handling conveyors
- Powered roller conveyors
- Chain / Slat conveyors
- Bottle slat conveyors
- Stackers and loaders
- Inter-floor conveyors
- Overhead monorail conveyors
- Bulk handling conveyors
- Baggage handling conveyors
- Extendable conveyors
- Casflex conveyors
- Special application equipment
- Stainless steel / mild steel / aluminium
- Factory Automation
- Complete turnkey projects



www.Powercon.co.za
Info@powercon.co.za

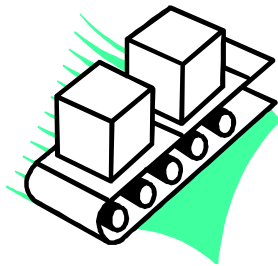
PO Box 39232, Queensburgh, 4070
25 Downie Crescent, Queensmead Industrial Area, Queensburgh, Durban
KwaZulu Natal, South Africa
Tel: +27 (0) 31 464 6497
Spares Tel: +27 (0) 31 463 2174
Fax: +27 (0) 31 464 3082

**BROWSE THROUGH OUR CATALOGUE TO SEE HOW
WE CAN HELP YOU INCREASE PRODUCTIVITY AND
DEVELOP YOUR BUSINESS** → → → → → → → → → →

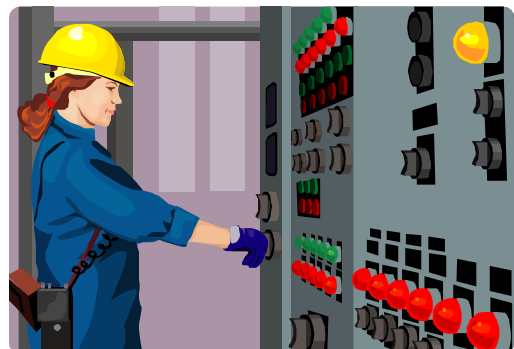
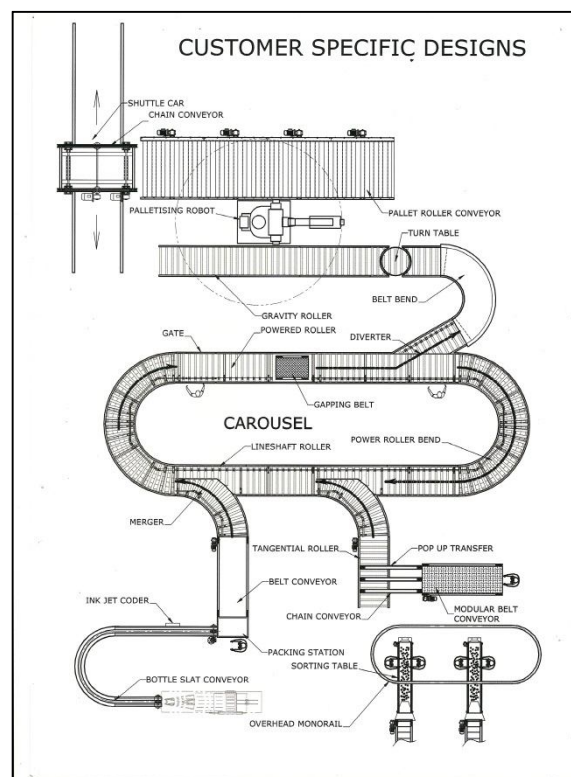
At **POWERCON HANDLING SYSTEMS**, we strive to satisfy our customers by manufacturing and installing **Quality Conveyor Systems**, competing at an international level. We will undertake conveyor projects from the simplest of applications to complete Turnkey Operations and Factory Automation projects. Established in 1982, our track record speaks for itself.

MANUFACTURERS OF:

- Gravity Roller Conveyors
- Belt Conveyors
- Chain/Slat Conveyors
- Bottle Slat Conveyors
- Stackers and loaders
- Powered Roller Conveyors
- Overhead Monorail Conveyors
- Bulk Handling Conveyors
- In-Line Checkweighers



We also complete
Automation/Turnkey Projects
and build **Special Application**
Equipment.



Contact us

Tel: 031-464 6497

Fax: 031-464 3082

Email: info@powercon.co.za

Website

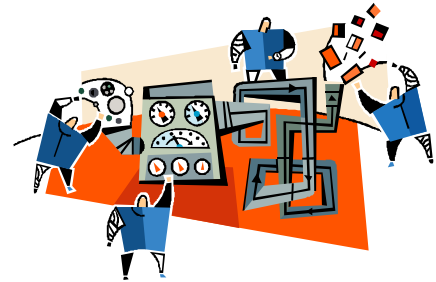
www.powercon.co.za

Address:

25 Downie Crescent, Queensburgh, Durban, South Africa

There are a few primary considerations when planning and designing system/organisation requirements:

- Factory layout considering immediate and long-term alterations and additions.
- Conveyor line operation relative to system requirements.
- Factory operation such as single or double shift.
- Volume to be handled and operational speed.
- Nature of the item to be handled, with respect to carrier surface, stability, etc.
- Degree of automation envisaged.
- Space available for the operation.
- Need to retain or change the orientation of the item to the conveyor.



Once all of the above has been considered, a **POWERCON** Engineer can select the correct solution from the wide range of standard and non-standard equipment, to best suit the application.

POWERCON's experience and knowledge are available to help you select the correct methods and equipment to best suit your specific requirements/specifications. **POWERCON** will undertake the design, manufacture and installation of the complete system including the operating controls, giving you peace of mind and reducing the number of contractors required to complete a system.

POWERCON

Handling Systems (Pty) Ltd.

Moving your business along our lines

BELT CONVEYORS

POWERCON Belt Conveyors are designed and built to cope with heavy duty production or storage environments. Applications are limitless, from simple transfers to assembly lines. Belt conveyors are the most common and cost effective automation solution available.

POWERCON's versatile range of Belt conveyors are built to suit all your warehousing requirements, fully designed and manufactured in house at our facilities in Durban, South Africa. A professional team will install your unit/system wherever required.



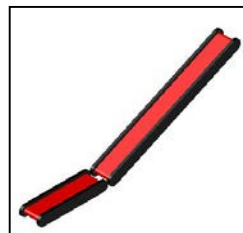
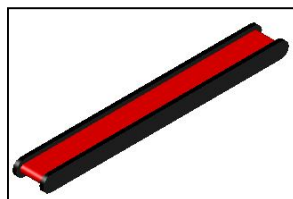
STANDARD FEATURES

- Powder Coated / Stainless Steel Frames
- Guaranteed Tracking
- Robust Construction
- Simple to maintain
- Belt types - PVC, Rubber, Polyurethane, Teflon etc.
- Large range of accessories available.
- Electrics /controls /speed control available.



SPECIFICATIONS

Height Top of Conveyor	As per your requirements/specification
Belt Width	25mm – 2400mm
Over Deck Width	Belt Width +80mm
Motor/Gearbox	Close coupled Bonfiglioli or similar either shaft mounted or via couplings.
Load Rating	As per your requirements/specification



Contact us Tel: 031-464 6497 Fax:031-464 3082 Email: info@powercon.co.za
Website www.powercon.co.za
Address: 25 Downie Crescent, Queensburgh, Durban, South Africa